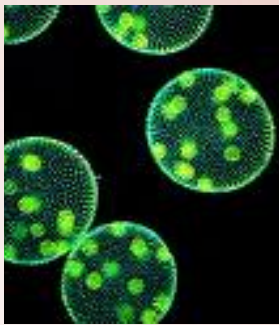


PBIO 1210L Fall 2009
Plant Biology Lab
(1 Credit)
Non-Science Majors
Core Area D:
Fulfills Laboratory Requirement



Small, Hands-On Labs (16 Students max.)
meet once a week for 2 hr sessions
Tuesdays, Wednesdays, or Thursdays
Pre or co-requisite: PBIO 1210

Dr Brigitte Bruns: 706-542-1783; bruns@plantbio.uga.edu

PRINCIPLES IN PLANT BIOLOGY LABORATORY

PBIO1210L, FALL 2009 - Laboratory Schedule

Lab 1	Introduction Lab expectations - Syllabus Inquiry-based labs and scientific approach How to use a microscope
Lab 2	Cell Structure
Lab 3	Plant Structure
Lab 4	Photosynthesis and Respiration
Lab 5	Transpiration
Lab 6	Enzymes 1
Lab 7	Enzymes 2
Lab 8	Plant Growth 1
Lab 9	Plant Growth 2
Lab 10	Reproduction
Lab 11	Potato Crop Management
Lab 12	Field trip Plant Biology Department Greenhouses
Lab 13	BT Cotton
Lab 14	Student Presentations Economic Botany and Ethno Botany